

Dynamic Picking

SimplePick by GEBHARDT High-performance workstation





SimplePick High throughput - low stress

m:1

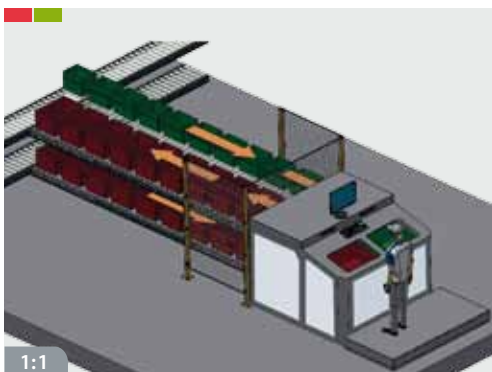
SimplePick by GEBHARDT is the answer to the continually increasing requirements on staff and facilities in intralogistics. The solutions are innovative intralogistics automation paired with a strong ergonomic design of workplace and environment. These reduce the employees' effort; at the same time, it is an effective basis for increasing the picking performance.

High delivery performance and flexible adjustment to changing conditions is the core task of internal logistics. Highly dynamic picking is required to be able to meet the increasing demand in production and trade. The growth of eCommerce, as well as the industrial just-in-time processes, demand high speed in the material flow. This can be achieved through technology that reduces manual work.

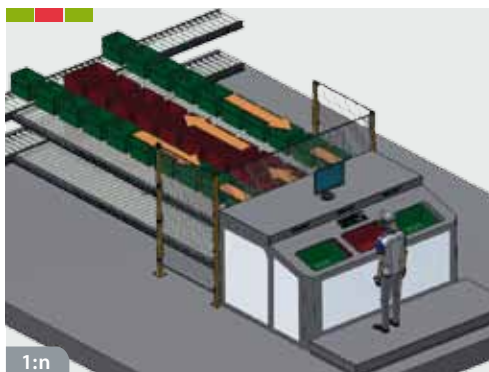
The use of the SimplePick modules reduces the error rate, approaching zero and decisively contributes to the safety & well being at the workplace.

Design, lighting and low noise levels are as important for focussed work as is the ergonomic placement and individual adjustability of each key element of the system. The more complex the processes, the more important effective design is. Highly dynamic picking can only be implemented efficiently with a high-performance workplace.

GEBHARDT's SimplePick is comparable to a sophisticated functional Cockpit. Optimised for high performance, the technical control of the process promotes effective picking, and reduces stress for the employees due to the ergonomic design.



1:1



1:n



P&P

GEBHARDT SimplePick

High-performance workplaces are configured according to area of use and built up flexibly in modules. Example versions:

1:1 Order Picking

- Often 1:1 relationships
- Few secondary activities
- Consolidation
- Separate loops for source and target containers
- Continuous container flow
- Differently sized containers possible
- Tote change time in 1.8 s
- 600–1000 order lines/h

1:n Multi-Order / Batch Picking

- Returns Receiving
- High-performance range
- Parallelism
- Modular structure
- Separate loops for source and target containers
- Continuous container flow
- Differently sized containers possible
- Tote change time in 1.8 s
- 500–1000 order lines/h

m:1 Multiple Sources

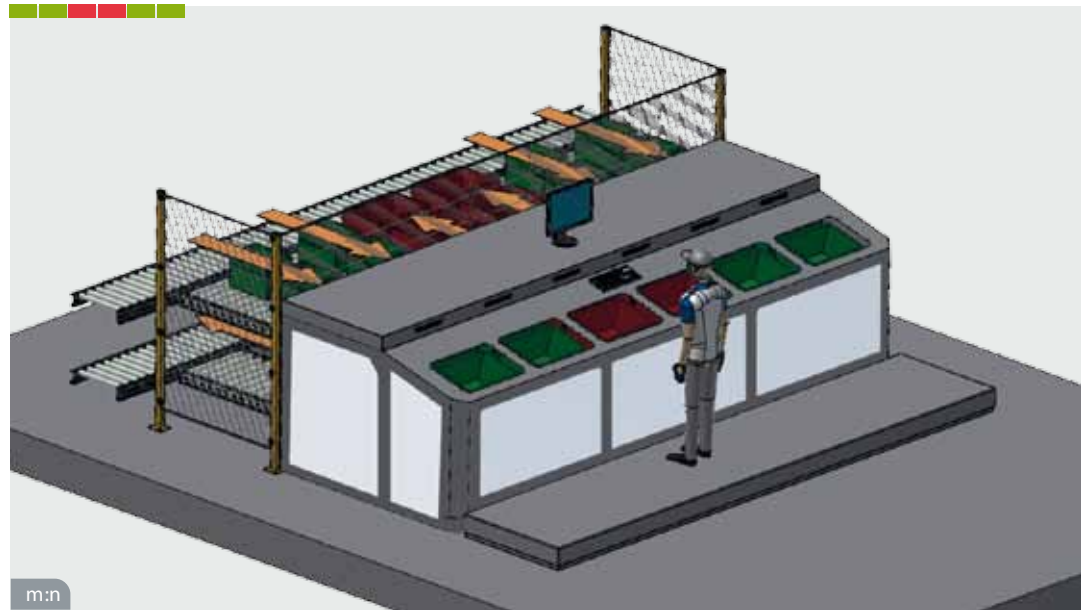
- Several employees per order
- Many secondary activities
- Special processes
- Multi-layered sequencing
- Separate loops for source and target containers
- Continuous container flow
- M-sources with quick or standard container change
- Tote change time in 1.8 s
- 300–600 order lines/h

m:n Multi-Order / Batch Picking

- High parallelism
- At peak times >1 employee
- Push-back automated or manual
- Continuous source container flow
- Differently sized containers possible
- Tote change time in 1.8 s
- 300–700 order lines/h

P&P Multi-Order / Batch Picking

- Pick and pack: one workplace
- High parallelism
- At peak times >1 employee
- Push-back automated or manual
- Continuous source container flow
- Deposits for packaging equipment
- Put-to-Light
- Tote change time in 1.8 s
- 200–400 order lines/h



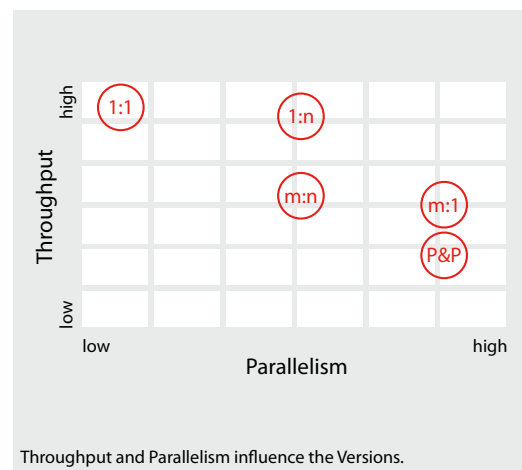
SimplePick – flexible and modular

GEBHARDT's dynamic SimplePick ensures high picking output and short container change times. Peak performance is supported by innovative order or container buffering and sequential provision. The detailed function required determines the equipment of the high-performance workplace. Homogeneity and composition of the order, as well as article range, sequence and secondary work influence the layout.

Ergonomics

In the SimplePick Cockpit, the different elements of the picking workplace can be individually adjusted to body size. Screens can be rotated and tilted, the keys and the lighting is optimised. The source and target containers are slightly angled. Pick-to-Light and Put-to-Light are incorporated into the design. A stress-free workplace allows a higher level of concentration resulting in greater throughput.

Versions



The high-performance picking workplace is set up modularly in a way to suit the process required. The number of source bins required, the number of order cartons needed, as well as secondary work functions, determine the version of the SimplePick offered. The required throughput and the ability to work on multiple orders simultaneously are important.

The range spans from order picking in a 1:1 relationship to multi-order picking with packing at the workplace. The modular setup, consistent container flow and flexibility of differently sized containers are possible across the range. Separate loops are set up for source and target containers.

The SimplePick basic module

The high-performance pick and pack workplaces use a number of SimplePick basic modules with which the containers are supplied or removed on conveyors. For example, empty containers are supplied from above, source containers usually from below. Depending on version, up to six basic modules are configured together. Integration into the conveyor route with GEBHARDT System 300 is seamless.



GEBHARDT Fördertechnik GmbH
Neulandstrasse 28
D-74889 Sinsheim
Phone +49 (0) 7261 939 0
Fax +49 (0) 7261 939 100
foerdertechnik@gebhardt-group.com
www.gebhardt-foerdertechnik.com



© 2015 GEBHARDT Fördertechnik GmbH
All rights reserved